

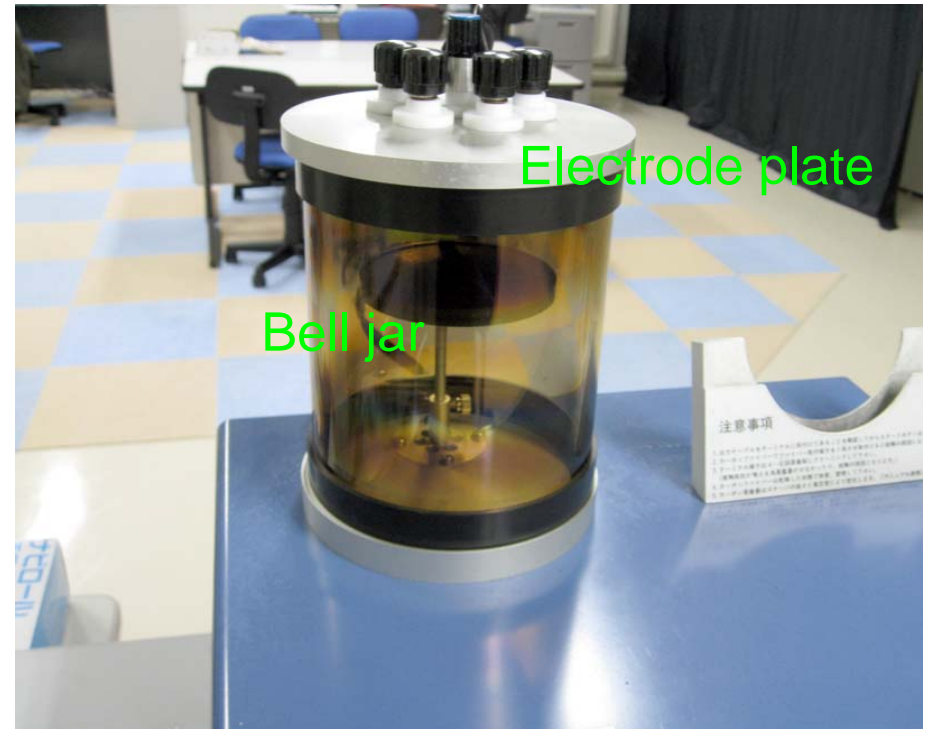
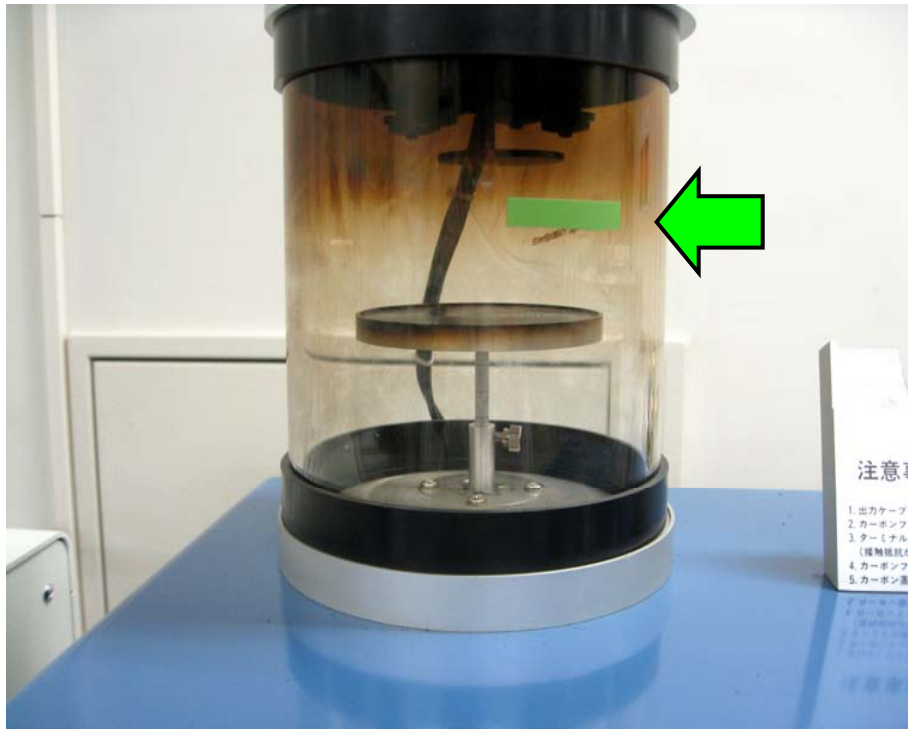
# Operation Manual (Carbon Coater)

## (1) Mounting a Carbon fiber



Mounting a carbon fiber on the electrode

## (2) Setting sample



Matching sample surface with  
green line by adjusting stage height

(3) Close leak-valve  
[Leak ②]

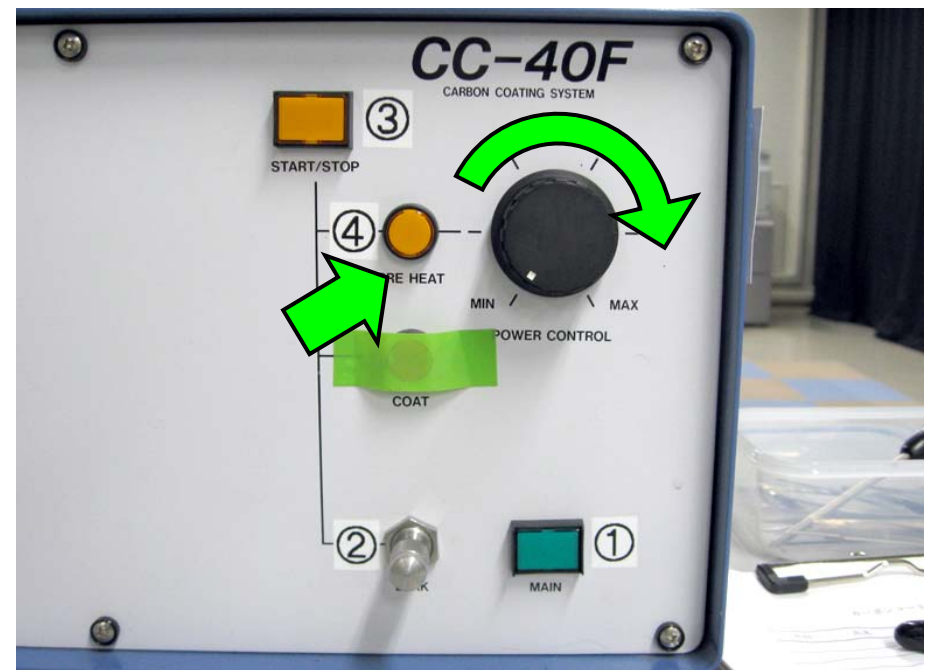
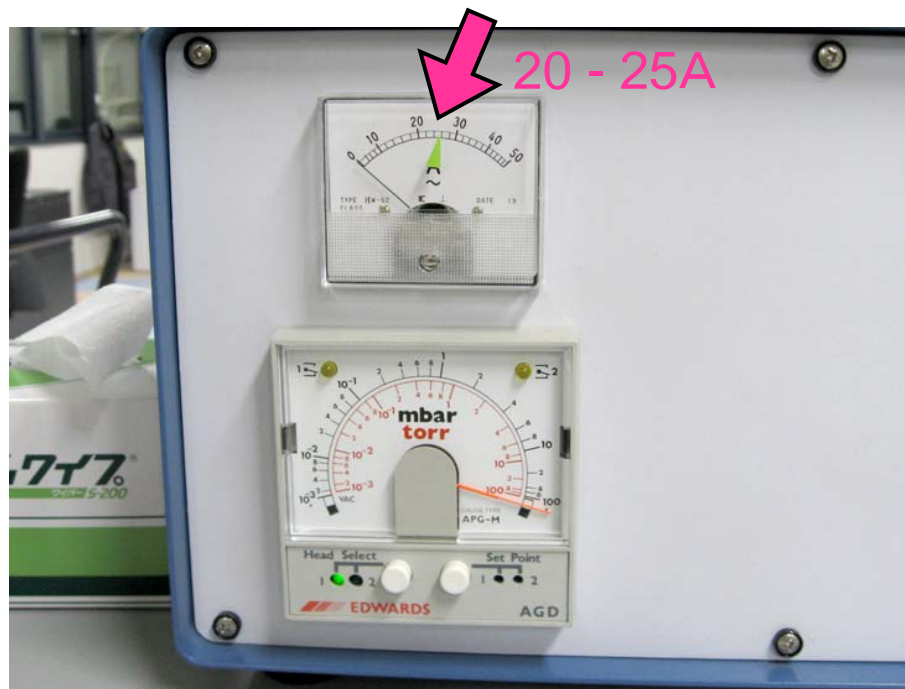


(4) Press a pump button  
[START/STOP ③]



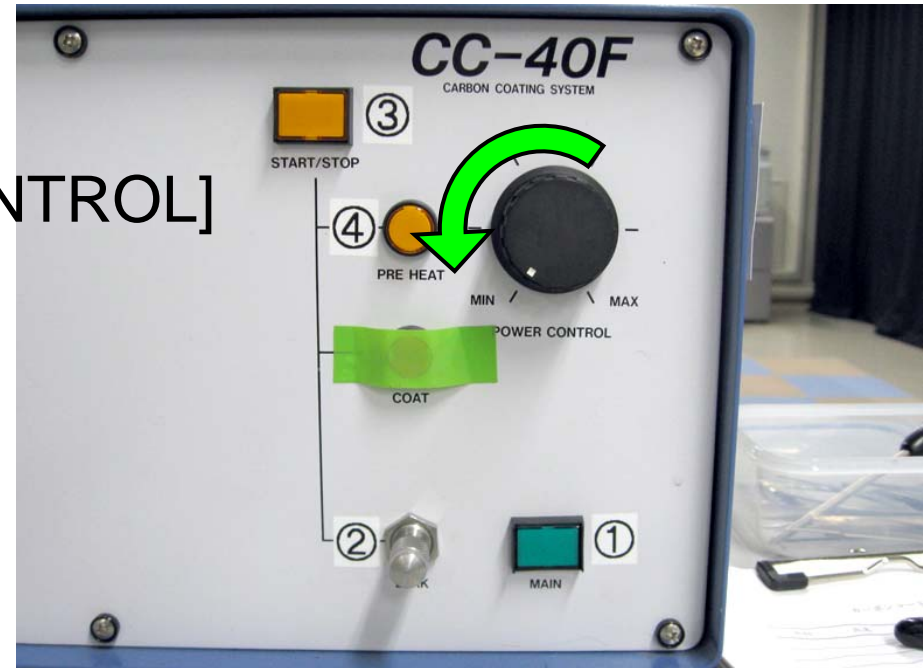
(5) Vacuum  $10^{-1}$  Torr below

(6) With pushing a switch [PRE HEAT ④], turn knob [POWER CONTROL] and hold with current rang from 20 - 25A

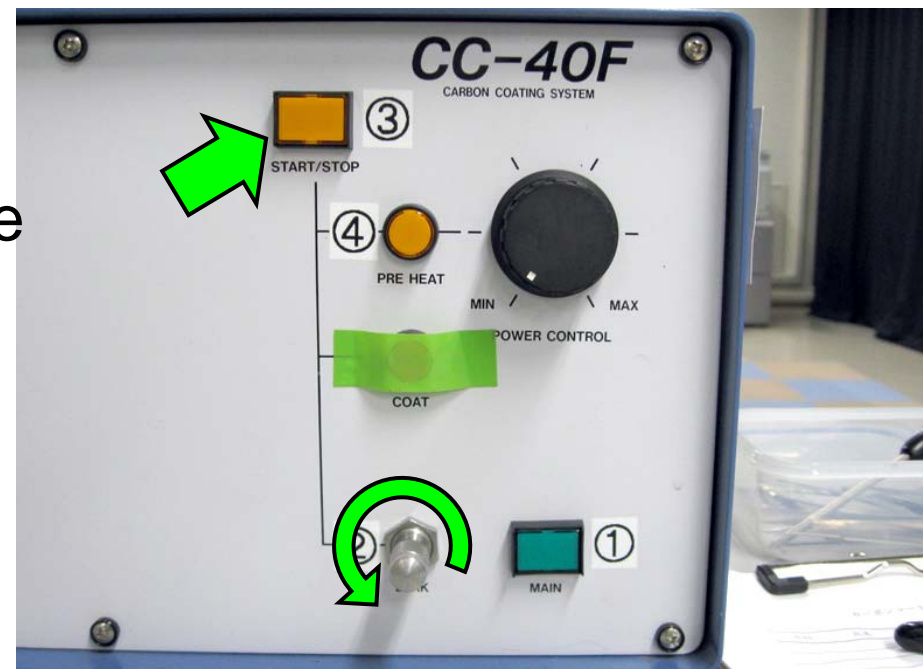




(7) After electric current does not flow, undo knob [POWER CONTROL]



(8) Turn off vacuum pump [START/STOP ③]



(9) leak-valve, wait for one-minute [Leak ②]